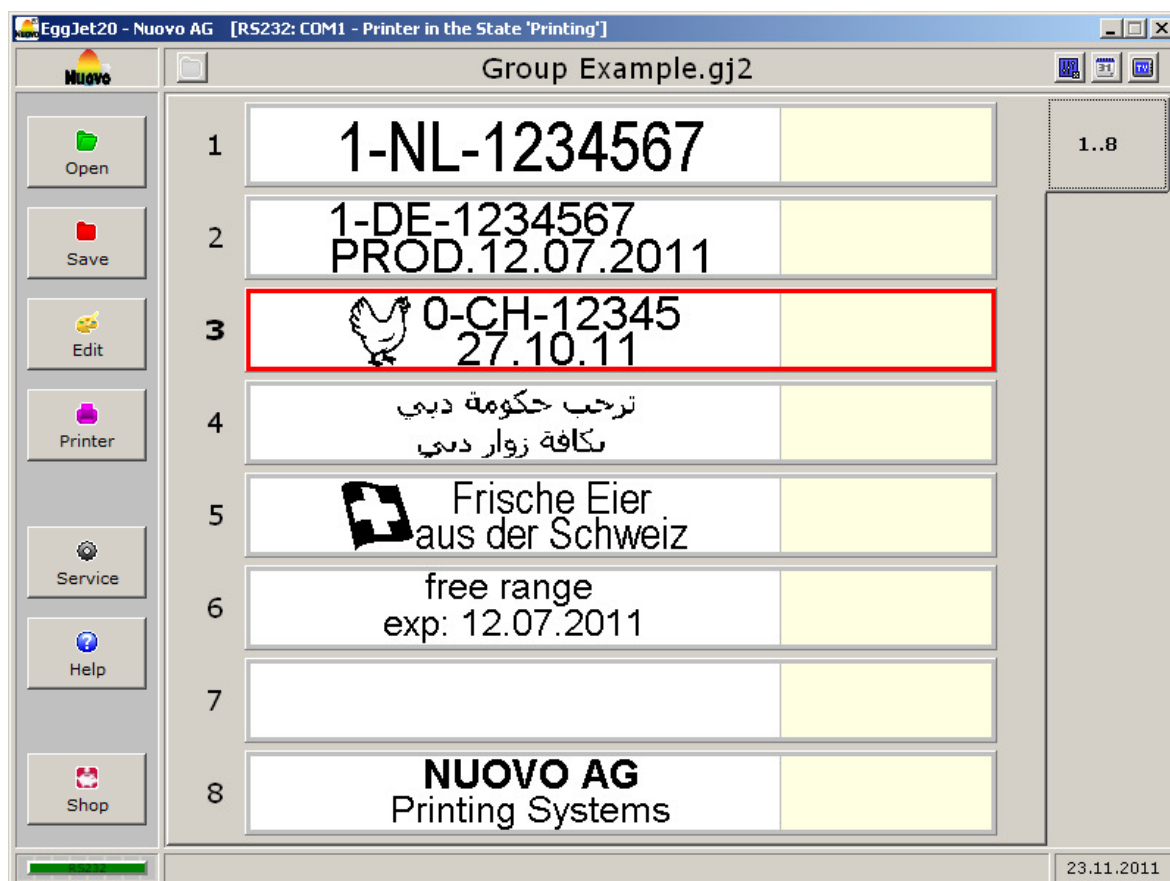


# EggJet20

## Version 07.00-8



### Nuovo AG

Barzloostrasse 20

8330 Pfäffikon ZH

Switzerland

Tel: +41 (0)44 950 05 20

Fax: +41 (0)44 950 57 33

E-mail: [info@nuovo.ch](mailto:info@nuovo.ch)

URL: [www.nuovo.ch](http://www.nuovo.ch)

**TABLE OF CONTENTS**

Getting Started ..... 3

System Requirements ..... 4

Installing and Uninstalling the Program ..... 5

Main Screen ..... 6

Designing Print Texts ..... 14

Settings and Diagnostics ..... 29

Index ..... 39

Contact ..... 44

# Getting Started

## OVERVIEW

EggJet20 is a program that makes it easy to edit, save and reload print texts and print text groups instantly. The program runs on a PC using Microsoft Windows.

**Free Range**



Laying date: 06.27.2011

Each print text has a maximum size of 42.4 mm x 4.2 mm and can be designed with graphic, text and date objects. All Microsoft Windows fonts, font sizes and formats can be used.

In order to print the texts, they have to be transferred from the EggJet20 program to the printer. Each printer can handle up to eight different print texts. To print the texts, the EggJet20 program does not have to be running, and the PC does not have to be connected to the printer.

The following documentation describes how to use the EggJet20 program. The keywords referred to in this user guide are listed in the index at the end of the guide. This user guide is available in several languages. For more information, please contact Nuovo AG.

# System Requirements

## PC

To run the EggJet20 program effectively, your PC should meet the following minimum system requirements:

- System: Computer with keyboard and mouse
- Processor: Intel Pentium 4 (1000 MHz) or equivalent
- Memory: 512 MByte of RAM
- Hard drive: 40 MByte free disk space
- Interface: Serial interface (RS232) or USB 1.0
- Video: VGA (800 x 600, 256 Colours)
- Operating System: Microsoft Windows XP



## PRINTER

The following printers are supported by the EggJet20 program:

- BAN1-20
- BAN5-20
- Sprinter-20
- SOR-20
- Piccolo-20
- Baby-20



For more information about these printers, see the relevant user guides.

## INTERFACE CABLE

Use the interface cable supplied to connect the EggJet20 program to the printer. There are two types of interface cable available:

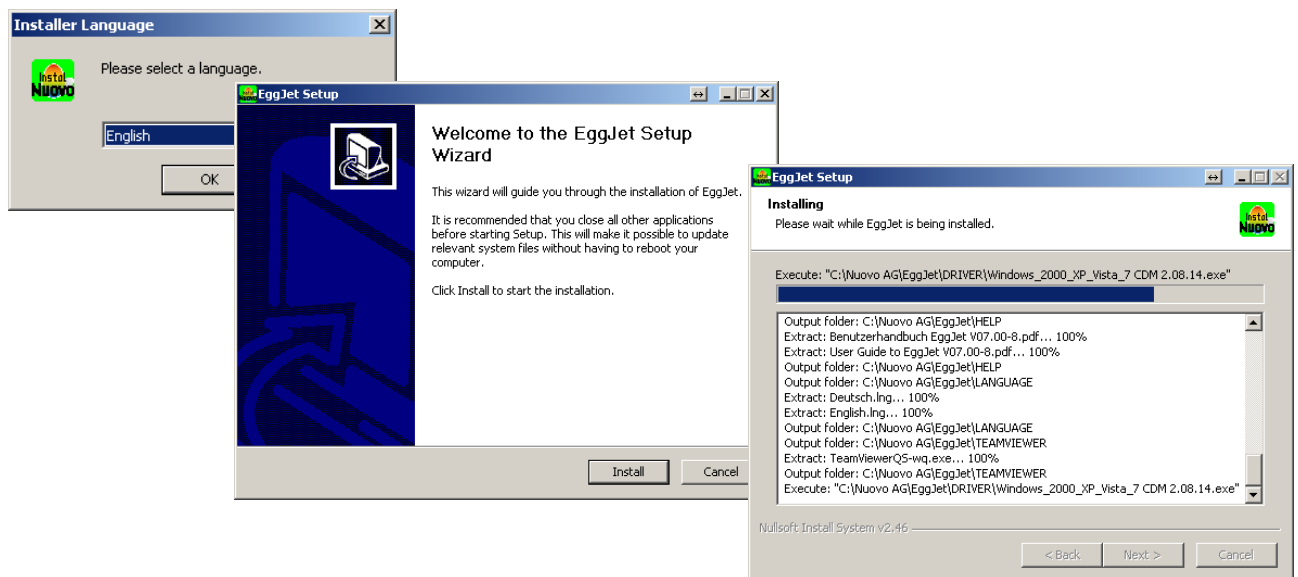
- Combox: For PCs with serial interface (RS232)
- ComboxCableUSB: For PCs with USB interface (USB 1.0 or higher)



## Installing and Uninstalling the Program

### INSTALLING THE EGGJET20 PROGRAM

Plug the USB stick into your PC. The installer then starts up automatically. Follow the instructions on the screen.



#### **Notes:**

- If the installer does not run automatically when you plug in the USB stick, you can start it manually via the Windows Explorer.
- Existing print texts will not be deleted.

### UNINSTALLING THE EGGJET20 PROGRAM

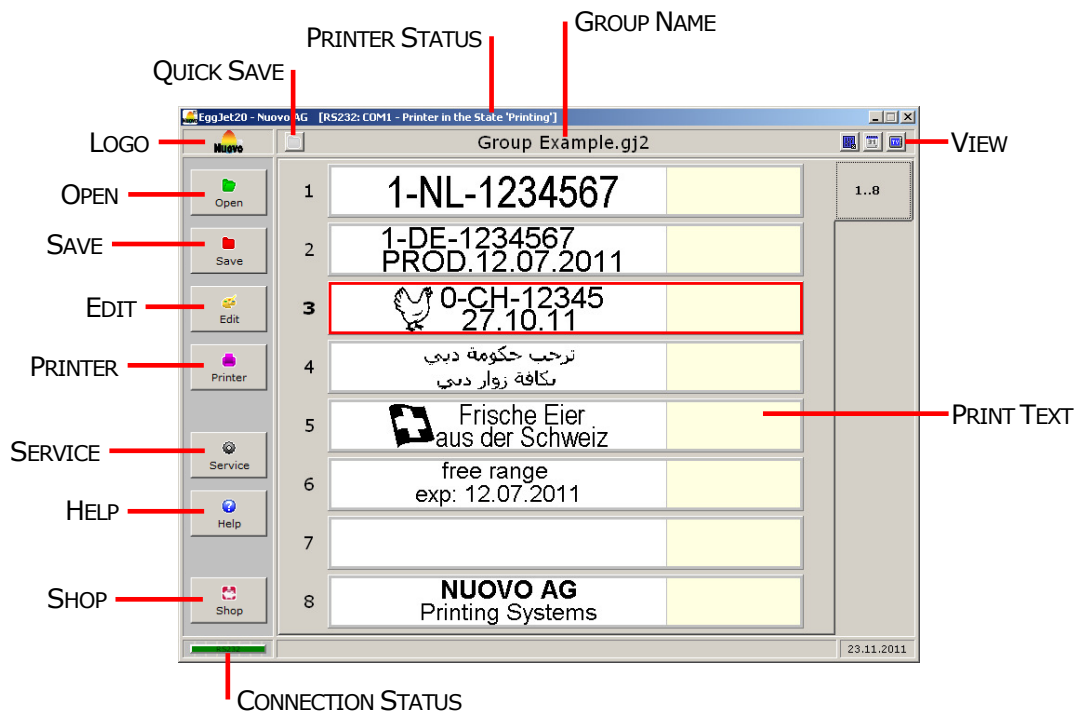
Go to the Microsoft Windows **CONTROL PANEL** and open the service program Software/programs. Select the EggJet20 program and click on the de-installation button. Follow the instructions on the screen.

#### **Note:**

Existing print texts will be deleted.

# Main Screen

## OVERVIEW



## PRINTER STATUS

The **PRINTER STATUS** provides information about the printer status and the connection between the EggJet20 program and the printer.

## CONNECTION STATUS

The **CONNECTION STATUS** provides information on the quality of the printer connection based on colours.

**Note:**

You can save print texts on the printer or change any printer settings only if this box is green.

## PRINT TEXT

The EggJet20 program is able to display eight **PRINT TEXTS** simultaneously. Each print text has a maximum size of 42.4 mm x 4.2 mm and can be designed with graphic, text and date objects. All Microsoft Windows fonts, font sizes and formats can be used.

### Notes:

- A printer provides space for eight print texts.
- Double left-click on one of the eight print texts to open the working area.

## GROUP NAME

Eight print texts form a group. Every group has its own **GROUP NAME**. On your PC you can save and open as many groups as you need.

## VIEW

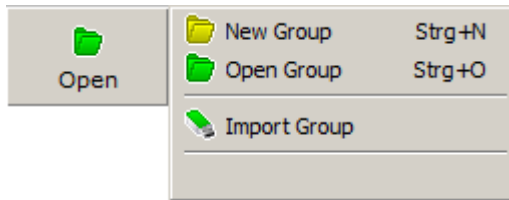
Left-click the respective icon to activate or deactivate the desired view of the eight opened print texts. Use these possibilities to keep track of things and avoid mistakes.



- 1) **VIEW PARAMETERS X** displays the parameters.
- 2) **VIEW DATE OBJECTS** displays the date object settings.
- 3) **VIEW PRINT PREVIEW** opens a window where you can simulate printouts using different print qualities (DPI).

## OPEN

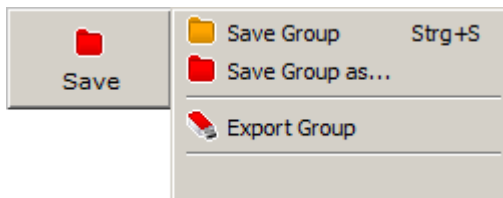
Left-click the icon to display a list containing three options:



- 1) Choose **NEW GROUP** to open eight empty print texts with the same parameters.
- 2) Choose **OPEN GROUP** to open eight existing print texts.
- 3) Choose **IMPORT GROUP** to import eight print texts from a removable memory (e.g. USB stick).

## SAVE

Left-click the icon to display a list containing three options:



- 1) Choose **SAVE GROUP** to save the eight displayed print texts. If they have not been saved before, the system asks for a group name.
- 2) Choose **SAVE GROUP AS** to save the eight displayed print texts under a new group name.
- 3) Choose **EXPORT GROUP** to export the eight displayed print texts to a removable memory (e.g. USB stick).

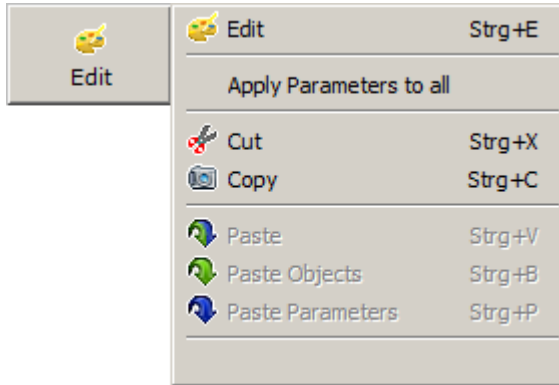
## QUICK SAVE

Choose **QUICK SAVE** to save the eight displayed print texts. If they have not been saved before, the system asks for a group name.



## EDIT

Left-click the icon to display a list containing seven options:



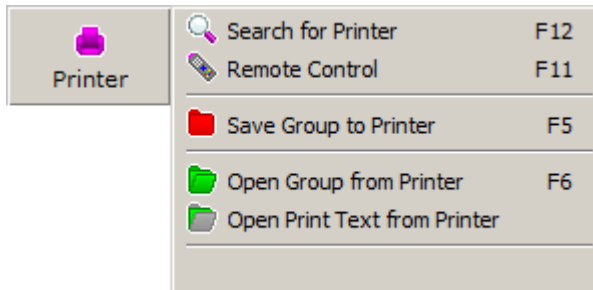
- 1) Choose **EDIT** to open the working area, where you can design print texts.
- 2) Choose **APPLY PARAMETERS TO ALL** to apply the parameters of the red framed print text to all print texts.
- 3) Choose **CUT** to cut the content and parameters of the red framed print text. You can paste them as often as necessary. They will be deleted from the red framed print text.
- 4) Choose **COPY** to copy the content and parameters of the red framed print text. You can paste them as often as necessary. They will remain in the red framed print text.
- 5) Choose **PASTE** to paste the content and parameters of a cut or copied print text.
- 6) Choose **PASTE OBJECTS** to paste the content of a cut or copied print text.
- 7) Choose **PASTE PARAMETERS** to paste the parameters of a cut or copied print text.

### **Notes:**

- Right-click on one of the eight print texts to display the same list.
- Double left-click on one of the eight print texts to open the working area.
- To exit the selection menu, left-click on the last empty row.

## PRINTER

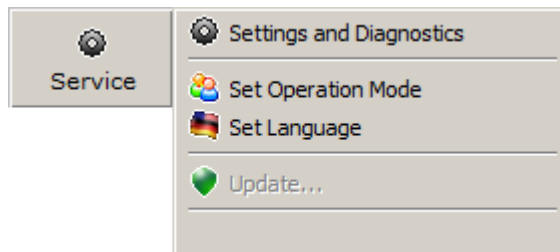
Left-click the icon to display a list containing five options:



- 1) Choose **SEARCH FOR PRINTER** to start the printer search process. If a printer is found, a connection is established automatically. If no printer is found, a wizard helps you to solve the problem.
- 2) Choose **REMOTE CONTROL** to operate the printer with the EggJet20 program.
- 3) Choose **SAVE GROUP TO PRINTER** to transfer the eight displayed print texts to the printer.
- 4) Choose **OPEN GROUP FROM PRINTER** to open the eight print texts from the printer.
- 5) Choose **OPEN PRINT TEXT FROM PRINTER** to open a single print text from the printer.

## SERVICE

Left-click the icon to display a list containing four options:



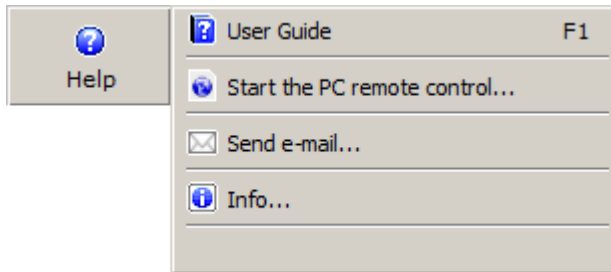
- 1) Choose **SETTINGS AND DIAGNOSTICS** to view or change the settings of the printer and EggJet20 program. Additionally, you can carry out printer diagnosis without using a measurement device.
- 2) The EggJet20 program supports different operation modes. Choose **SET OPERATION MODE** to select the operation mode in which you wish to operate the EggJet20 program. Please note that at least **ADMINISTRATOR MODE** is required to change the printer settings.
- 3) Choose **SET LANGUAGE** to select the language in which you wish to use the EggJet20 program.
- 4) The option **UPDATE** is activated if a new version is available on the PC. The installation starts with a mouse click.

**Note:**

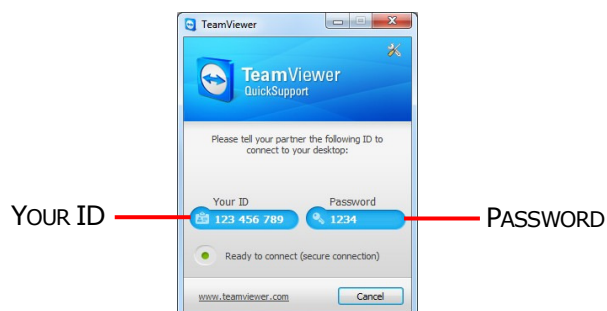
The EggJet20 program is featured with an automatic update function. This function regularly checks the actuality of the installed version and informs you if a newer version is available. We recommend installing the updates immediately.

## HELP

Left-click the icon to display a list containing four options:



- 1) Choose **USER GUIDE** to open this user guide or other available documents. For this purpose, a PDF reader (e.g. Adobe Reader) must be installed on your PC. If this program is not installed on your PC, you can download it for free from the Internet (e.g. [www.adobe.com](http://www.adobe.com)).
- 2) Choose **START THE PC REMOTE CONTROL** to open the program **TEAMVIEWER QUICK SUPPORT** that allows the Nuovo technician to operate your PC by remote control. Please provide the technician with **YOUR ID** and the **PASSWORD**.



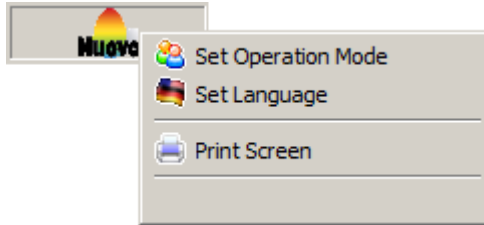
- 3) Choose **SEND E-MAIL** to send a message to Nuovo AG.
- 4) Choose **INFO** to display additional information about the EggJet20 program.

## SHOP

Via **SHOP** you can order consumables and other products.

## LOGO

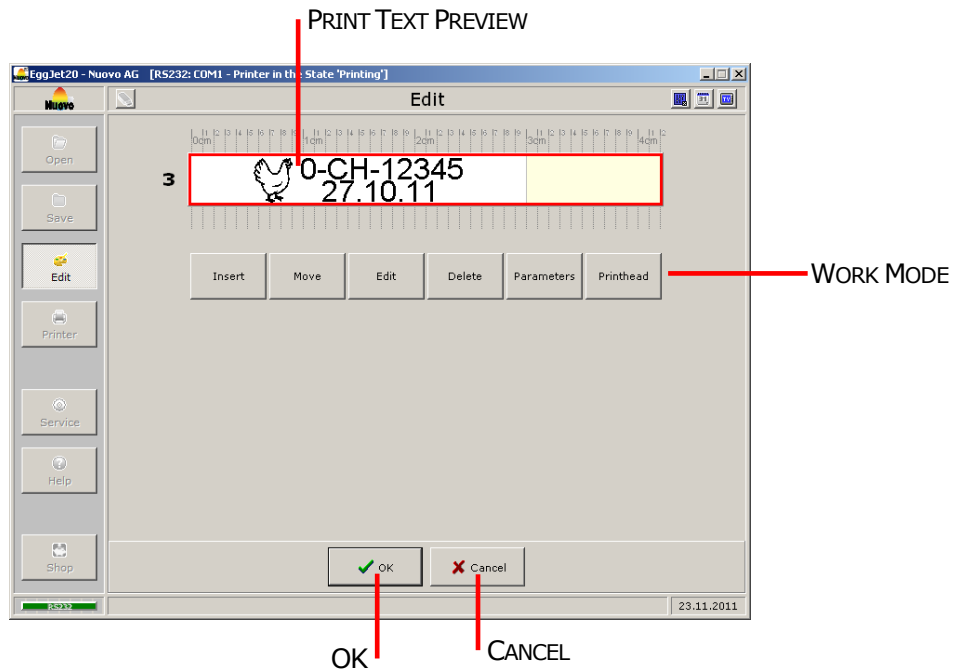
Left-click the icon to display a list containing three options:



- 1) The EggJet20 program supports different operation modes. Choose **SET OPERATION MODE** to select the operation mode in which you wish to operate the EggJet program. Please note that at least **ADMINISTRATOR MODE** is required to change the printer settings.
- 2) Choose **SET LANGUAGE** to select the language in which you wish to use the EggJet program.
- 3) Choose **PRINT SCREEN** to print the window content on an office printer (e.g. documentation purposes).

# Designing Print Texts

## OVERVIEW



## WORK MODE

Left-click the desired **WORK MODE** to activate it:

- 1) Choose **INSERT** to add a text, date or graphic object.
- 2) Choose **MOVE** to move an existing object.
- 3) Choose **EDIT** to modify an existing object.
- 4) Choose **DELETE** to remove an existing object.
- 5) Choose **PARAMETERS** to set the position and orientation of the print texts on the egg.

## **PRINT TEXT PREVIEW**

The **PRINT TEXT PREVIEW** field displays the print text as it will be printed by the printer.

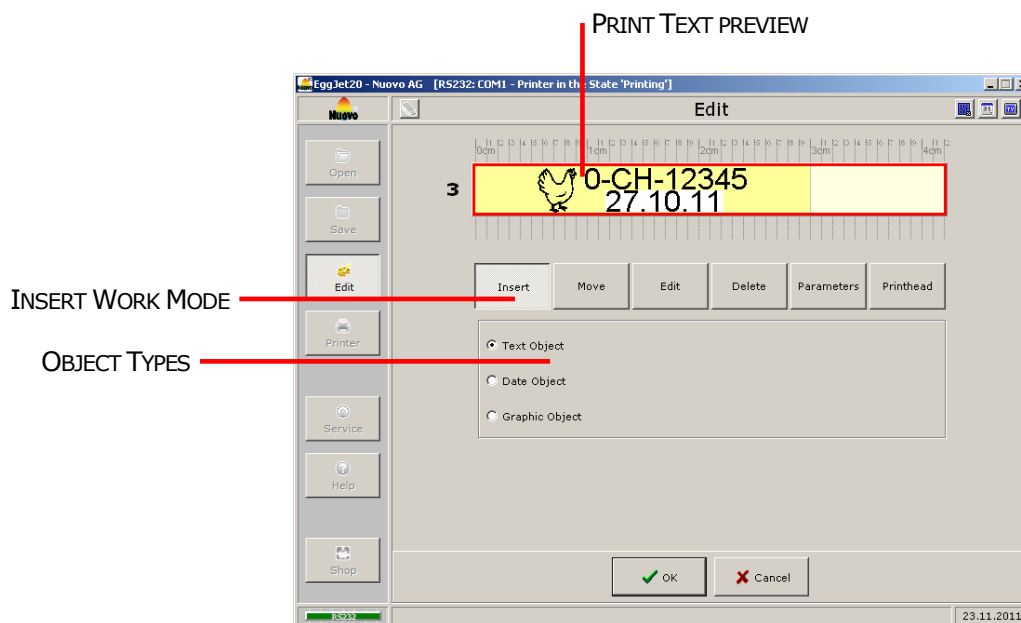
## **OK**

Left-click **OK** to leave the working area. Changes on the print text will be saved.

## **CLOSE**

Left-click **CLOSE** to leave the working area. Changes on the print text will be ignored.

## INSERT WORK MODE

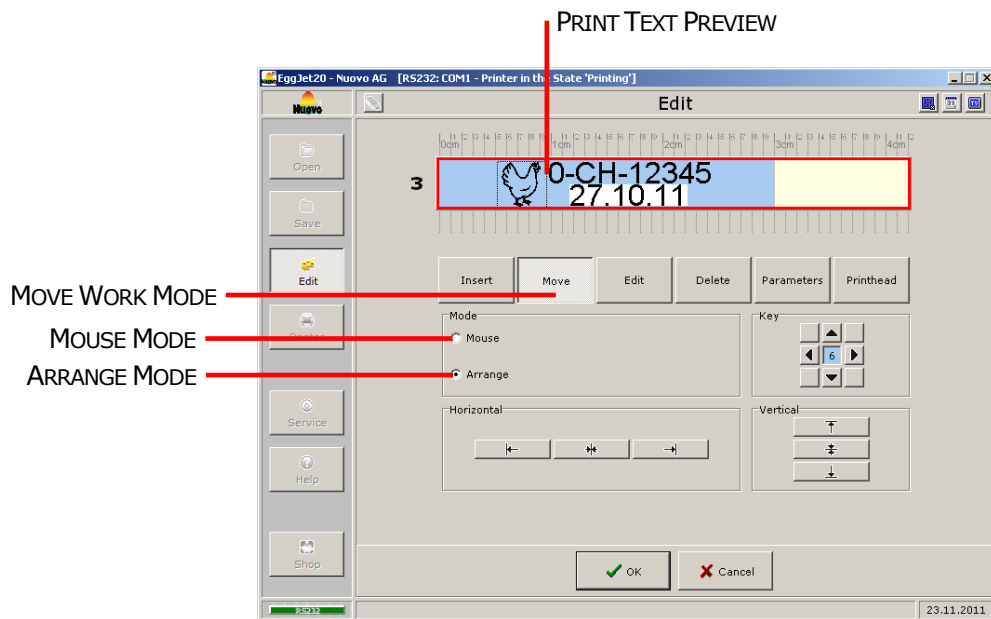


In **INSERT** work mode, you can add an object to a print text. Select the object type and left-click on the place in the **PRINT TEXT PREVIEW** where it should be inserted. There are three different **OBJECT TYPES** available:

- 1) Choose **TEXT** to add letters, numbers and signs (e.g. producer number or address). All Microsoft Windows fonts, font sizes and formats can be used.
- 2) Choose **DATE** to generate a date. The printer automatically updates the date according to the current date (e.g. laying or best before date). All Microsoft Windows fonts, font sizes and formats can be used.
- 3) Choose **GRAPHIC** to insert a graphic in bmp, dib, jpg, jpeg, jpe, jfif, ico, emf, emz, wmf or wmz format (e.g. producer or company logo).



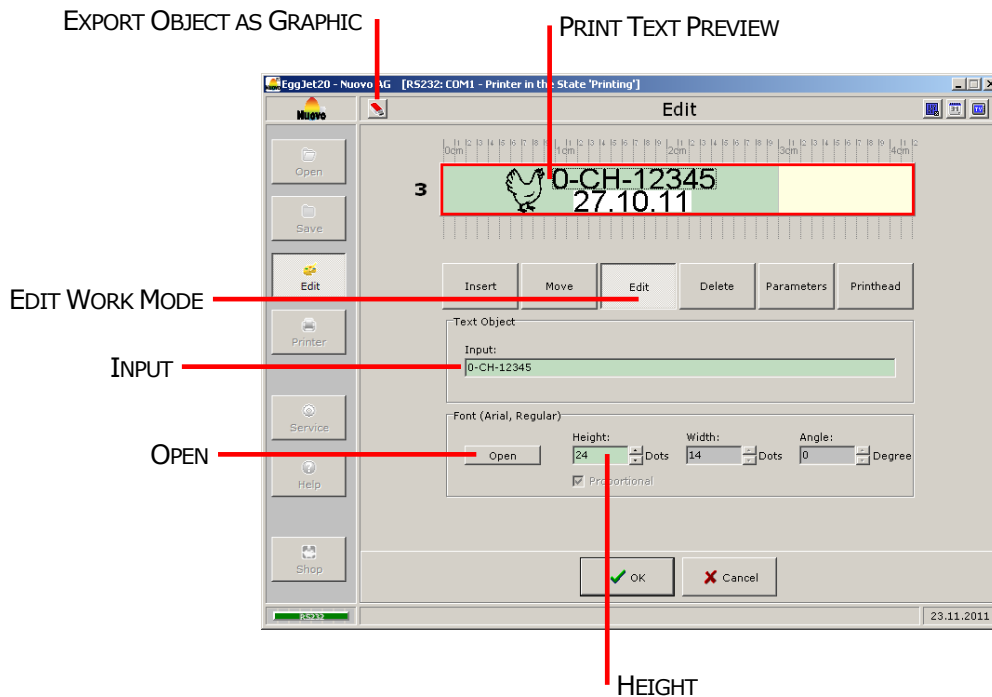
**MOVE WORK MODE**



In **MOVE** work mode, you can move an existing object. There are two different **MODES** available:

- 1) In **MOUSE** mode you can move the object with the mouse. Left-click the object, move it to the new position and release the mouse button.
- 2) In **ARRANGE** mode you can move the object either with the available buttons or the arrow keys of the keyboard. Left-click the blue box in the middle of the **KEY** buttons to change the size of the spacing. If you are moving the object with the arrow keys of the keyboard you can reduce the spacing to one pixel by pressing the CTRL key simultaneously.

**EDIT WORK MODE – TEXT OBJECT**

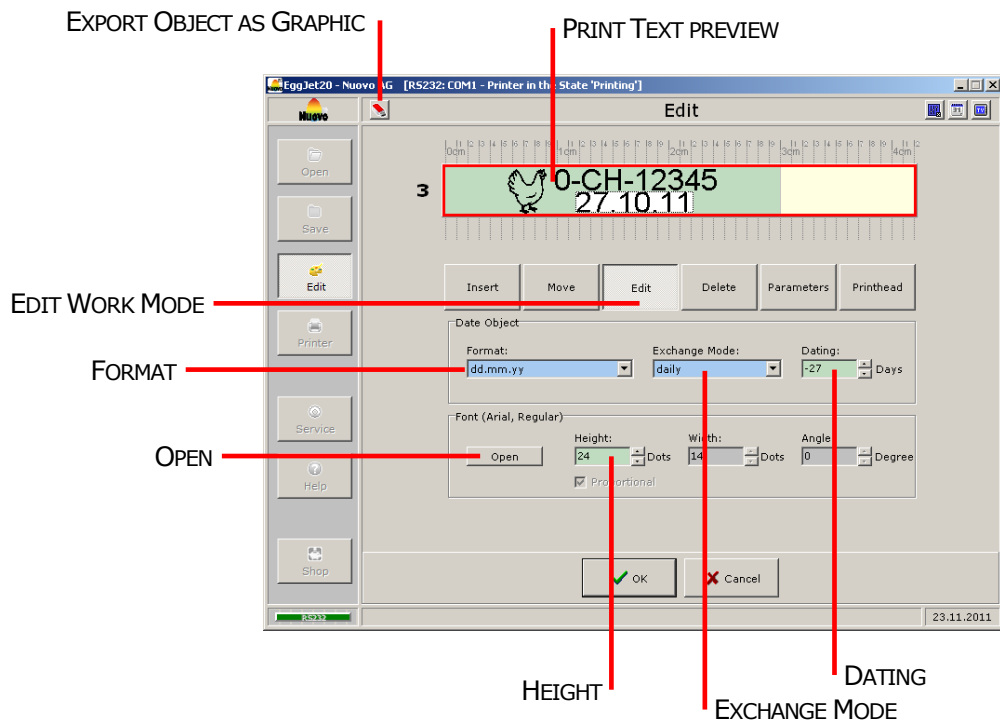


To modify a text object, change to **EDIT** work mode and left-click the respective object in the **PRINT TEXT PREVIEW** field. The working area appears below.

- In the **INPUT** field, you can change the content of the text object.
- Click on **OPEN** to change the font settings. The font height can directly be changed in the **HEIGHT** field.

Left-click the **EXPORT OBJECT AS GRAPHIC** icon to save the object as a graphic in BMP format. In this format you can add it to any other print text.

## EDIT WORK MODE – DATE OBJECT

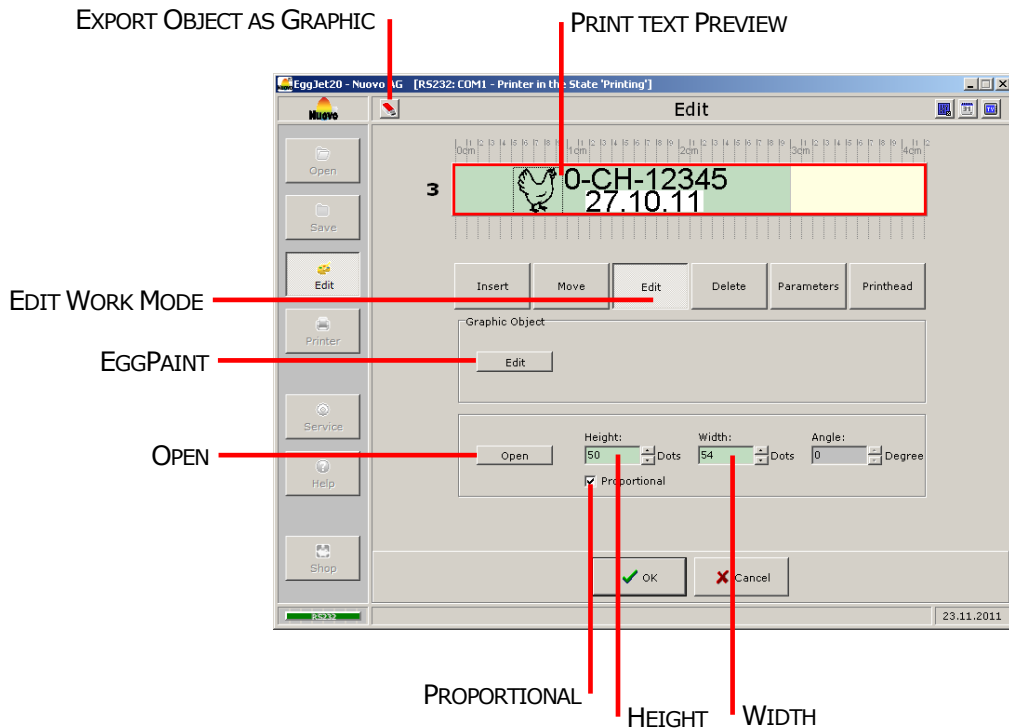


To modify a date object, change to **EDIT** work mode and left-click the respective object in the **PRINT TEXT PREVIEW** field. The working area appears below.

- **FORMAT** allows you to set the date format of the date object as you wish, so that you can label eggs in the usual date format of your country.
- In the **EXCHANGE MODE** selection field, you can define the days on which the printer has to update the date object.
- With **DATING**, you can create a date object that differs from today's date by a certain number of days. Dating allows you to label eggs with the correct laying date or a best before date (e.g. +30 days).
- Click on **OPEN** to change the font settings. The font height can directly be changed in the **HEIGHT** field.

Left-click the **EXPORT OBJECT AS GRAPHIC** icon to save the object as a graphic in BMP format. In this format you can add it to any other print text.

**EDIT WORK MODE – GRAPHIC OBJECT**

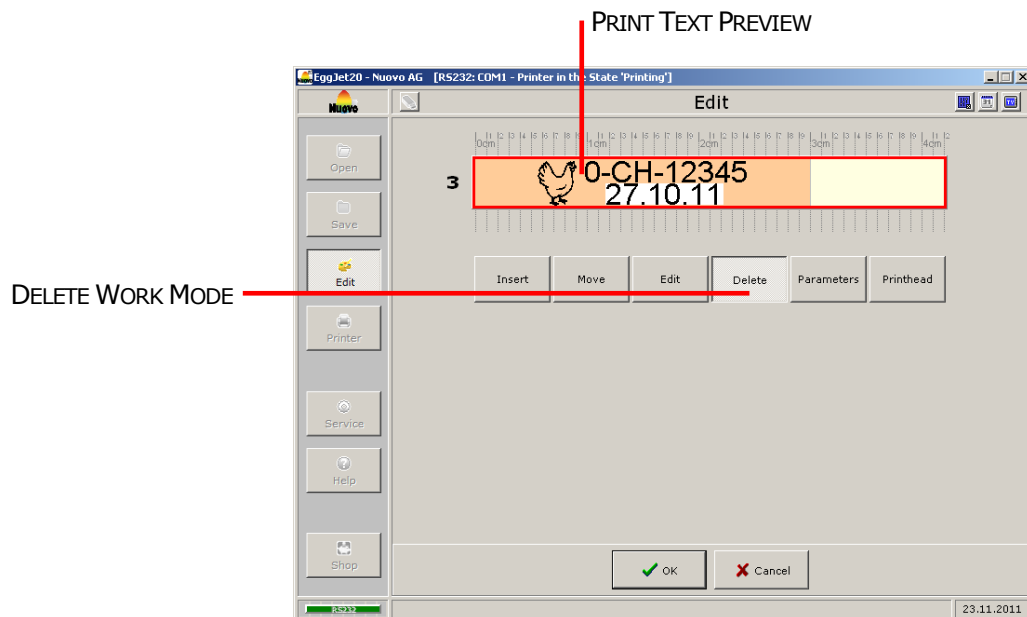


To modify a graphic object, change to **EDIT** work mode and left-click the respective object in the **PRINT TEXT PREVIEW** field. The working area appears below.

- With **EGGPAINT** you can create your own graphic object or individually adapt an existing one. For detailed information about the **EGGPAINT** functions, see the separate **USER GUIDE TO EGG-PAINT**.
- With **OPEN** you can upload a new graphic object. The following formats can be used: bmp, dib, jpg, jpeg, jpe, jfif, ico, emf, emz, wmf and wmz
- In the **HEIGHT** and **WIDTH** fields, you can change the size of the object. To distort the object, remove the tick in front of the **PROPORTIONAL** field.

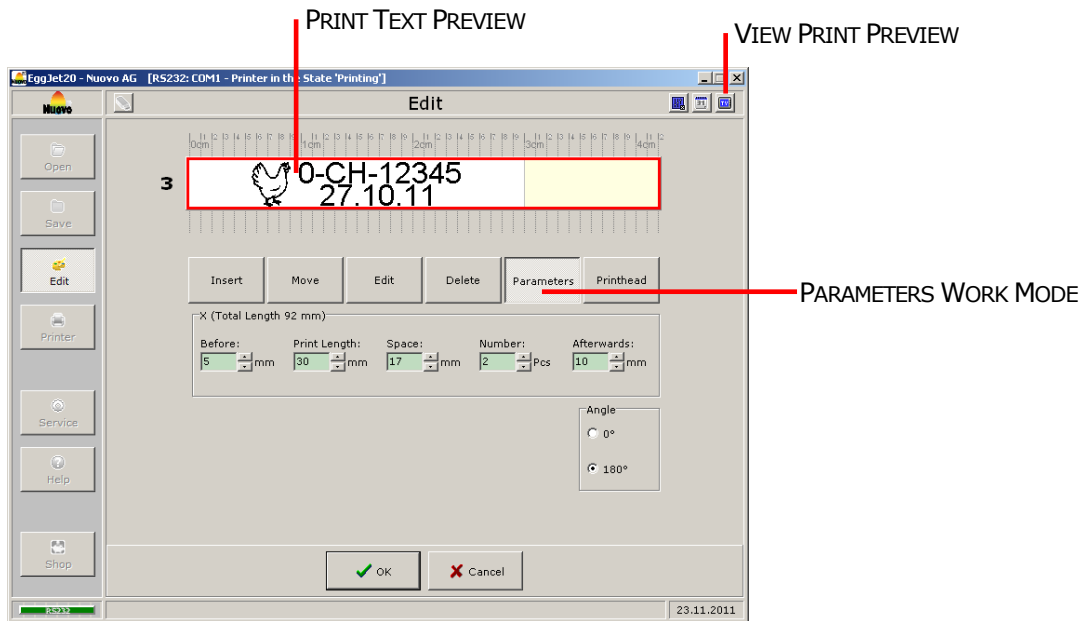
Left-click the **EXPORT OBJECT AS GRAPHIC** icon to save the object as a graphic in BMP format. In this format you can add it to any other print text.

### DELETE WORK MODE



To remove an object, change to **DELETE** work mode and left-click the respective object in the **PRINT TEXT PREVIEW** field.

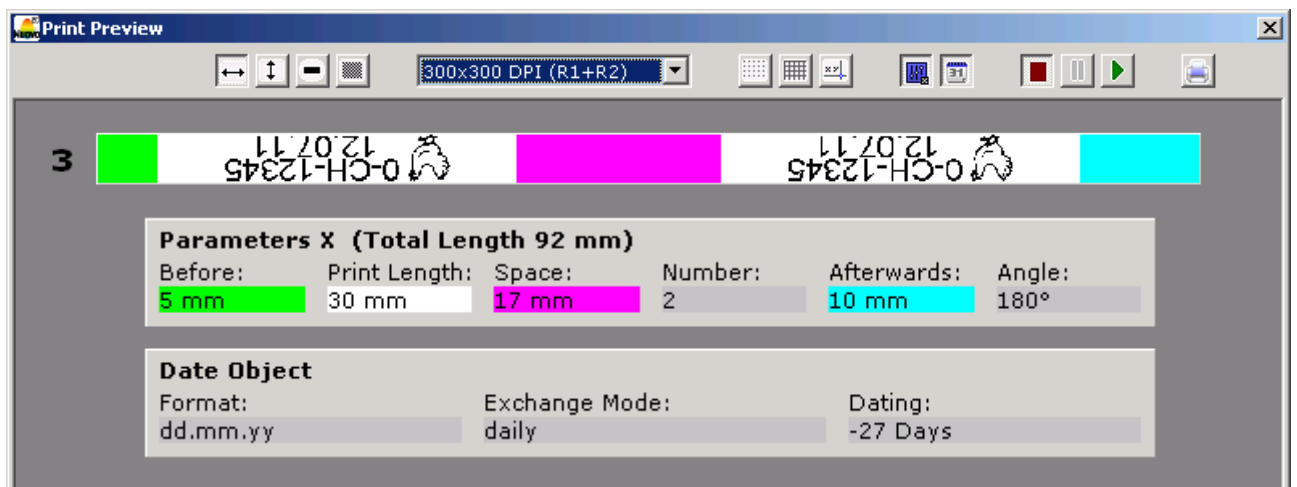
**PARAMETERS WORK MODE**



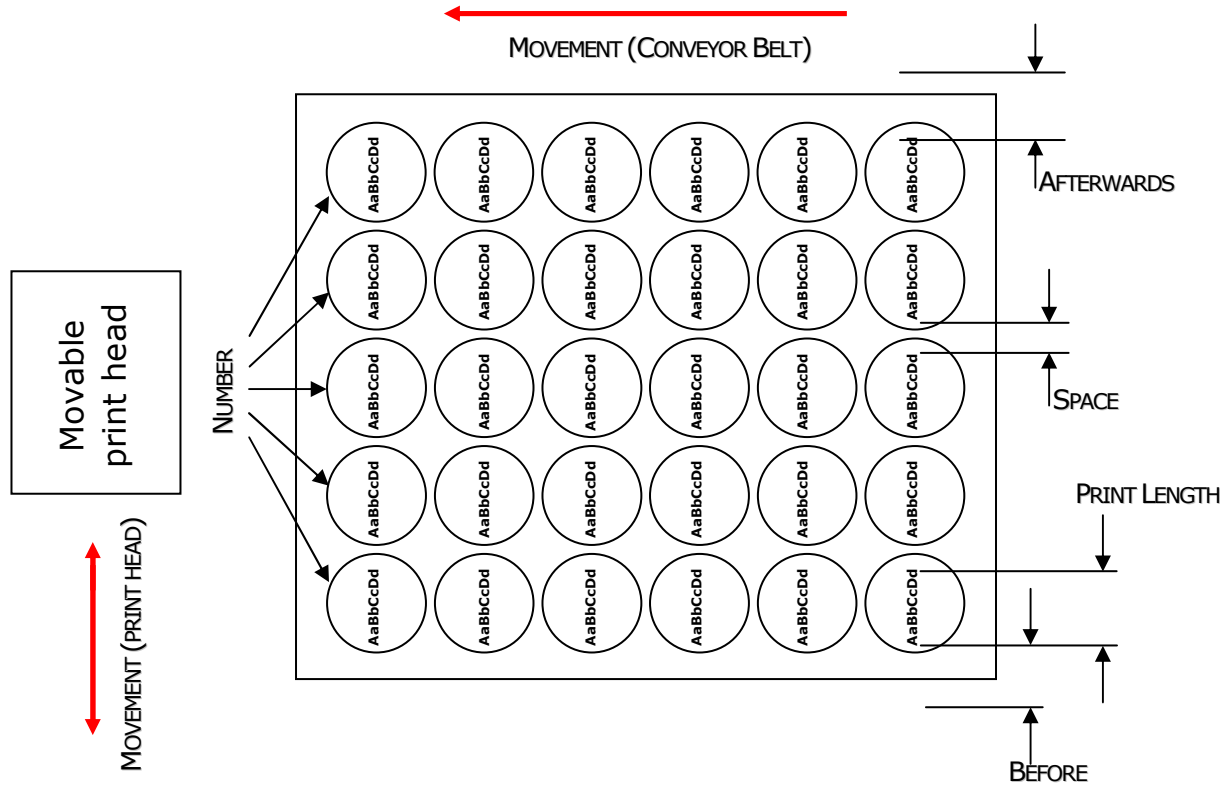
Change to **PARAMETERS** work mode to optimise the position and orientation of the print texts on the egg.

**VIEW PRINT PREVIEW**

**VIEW PRINT PREVIEW** displays the print preview with the adjusted parameter settings.



**PARAMETER BAN1-20**



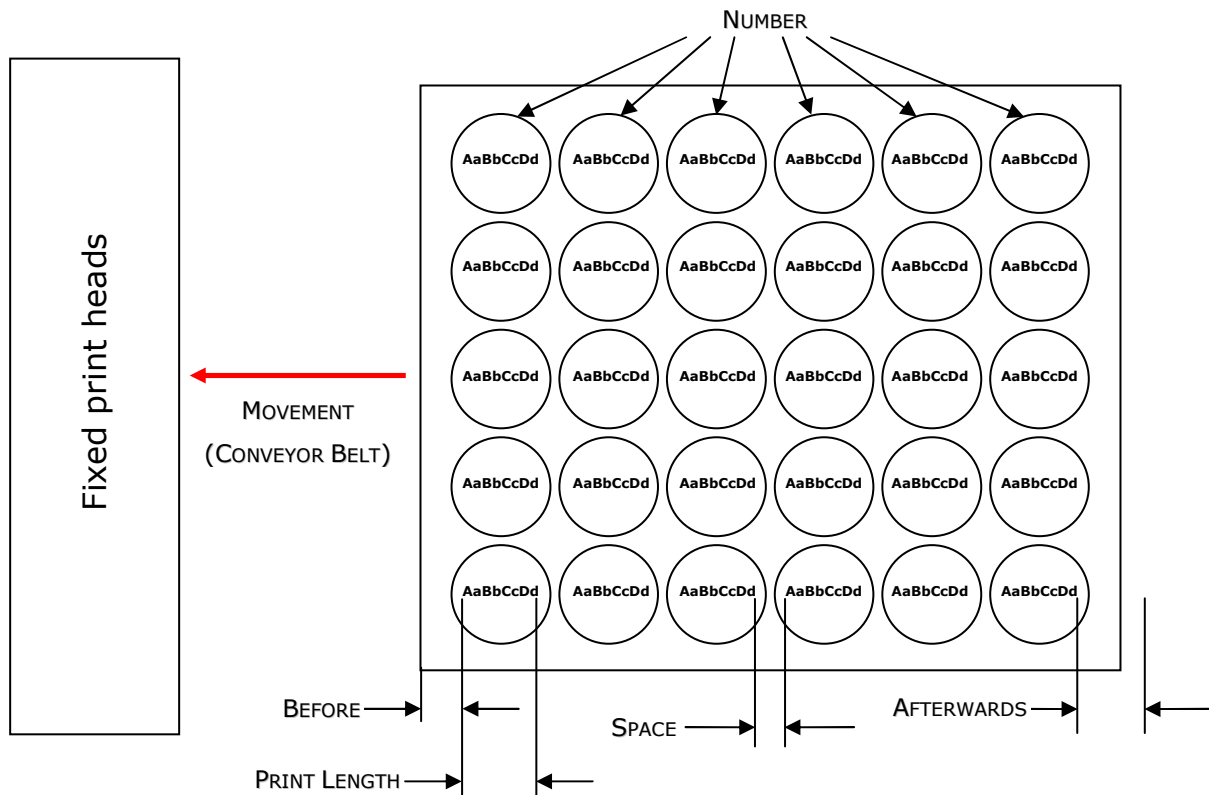
The **BEFORE** value is the distance between the left position of the print head and the beginning of the first print text on an egg.

You should set the **AFTERWARDS** value so that the print head can slightly go beyond the egg box after printing the last print text.

**Note:**

By placing a filled egg carton under the machine, you can measure the parameters from the packaging and enter them directly.

**PARAMETER BAN5-20**



The **BEFORE** value is the distance between the front edge of the egg carton and the beginning of the first print text on an egg.

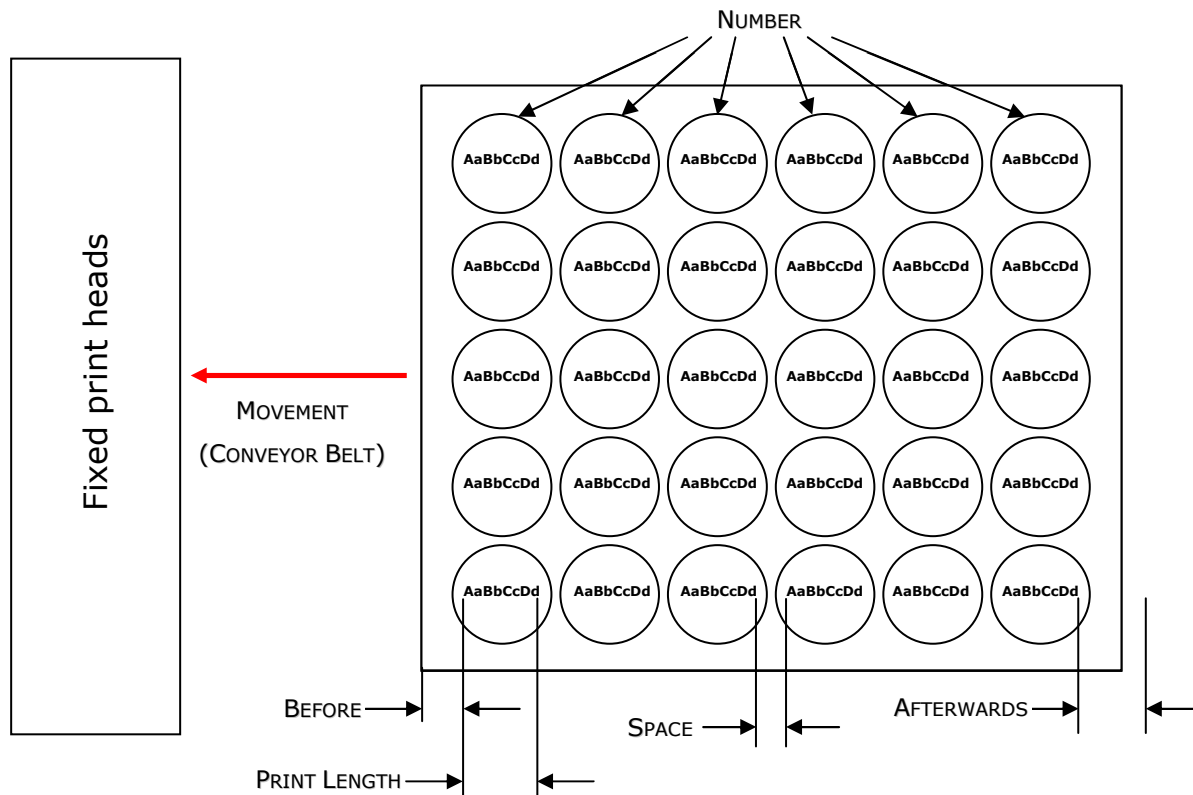
You should set the **AFTERWARDS** value so that the end of the egg carton will not be located under the print head.

**Note:**

By placing a filled egg carton under the machine, you can measure the parameters from the packaging and enter them directly.



**PARAMETER SPRINTER-20**



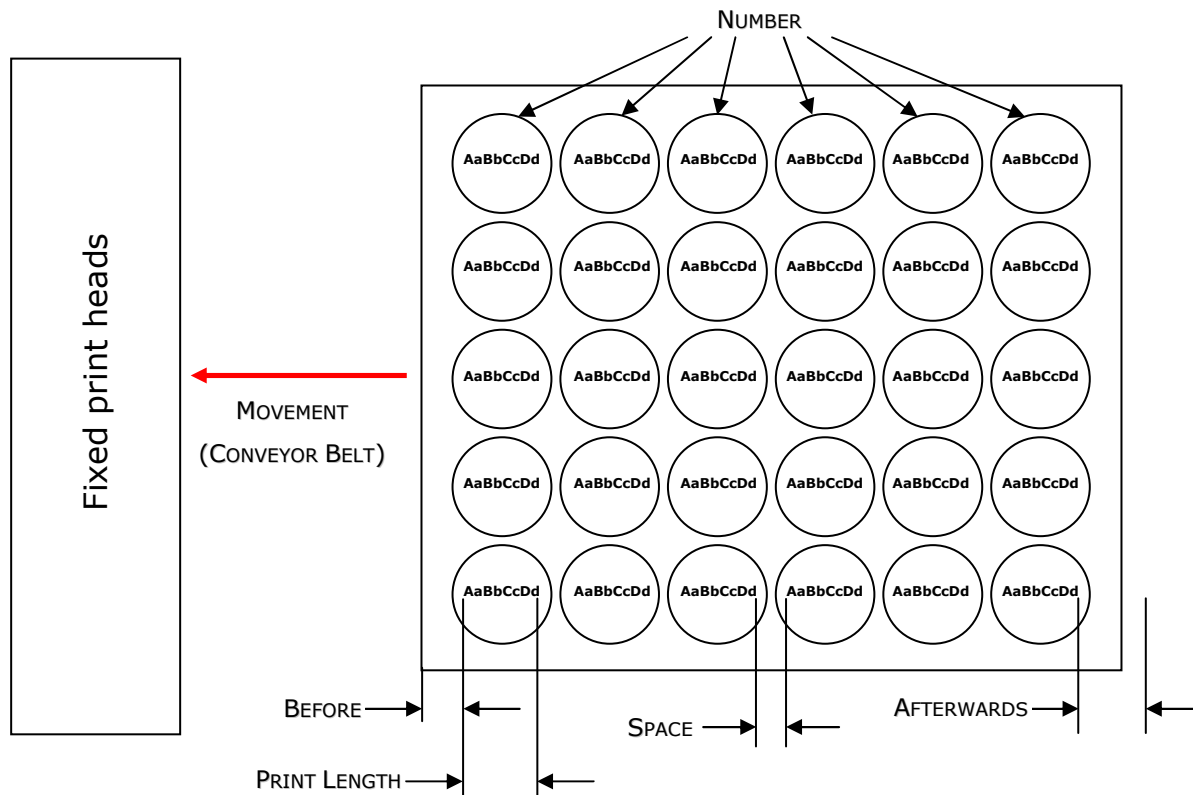
The **BEFORE** value is the distance between the front edge of the egg carton and the beginning of the first print text on an egg.

You should set the **AFTERWARDS** value so that the end of the egg carton will not be located under the print head.

**Note:**

By placing a filled egg carton under the machine, you can measure the parameters from the packaging and enter them directly.

**PARAMETER SOR-20**



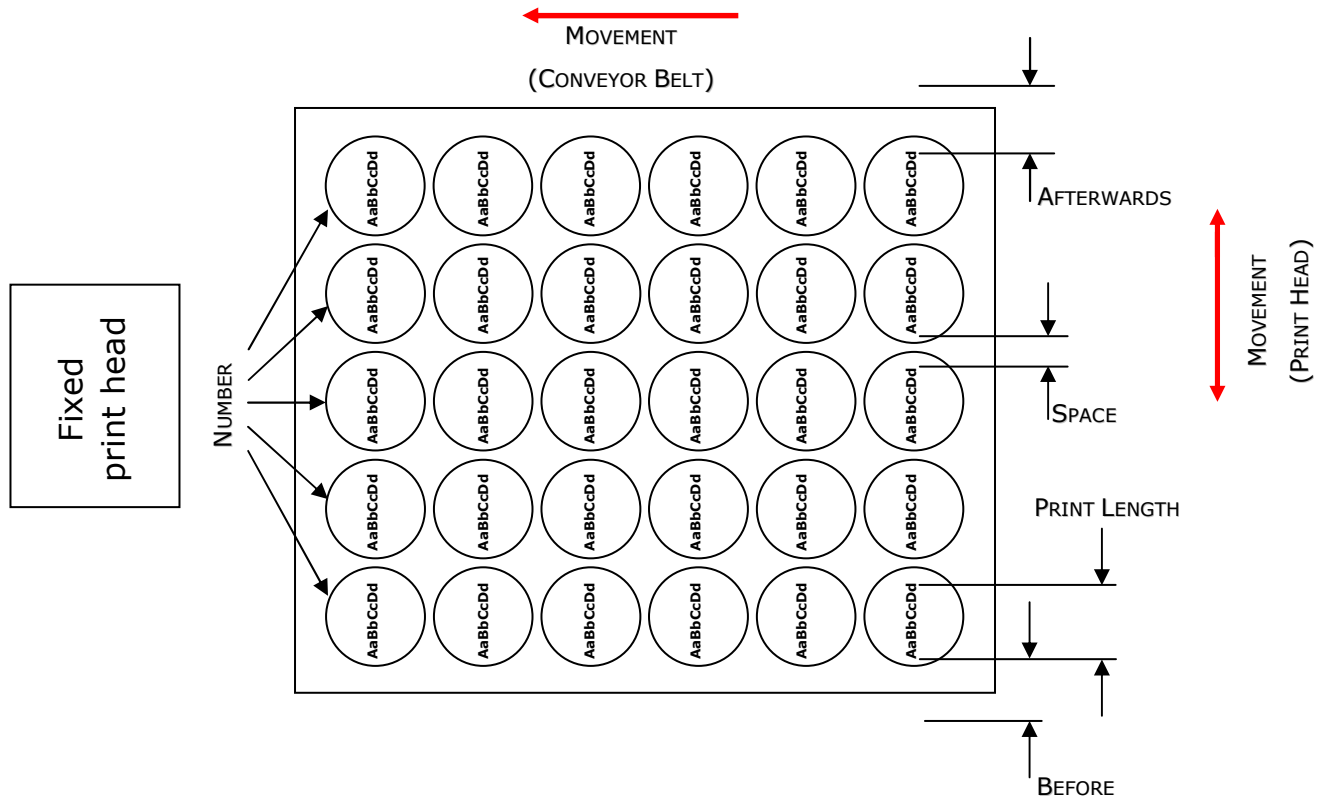
The **BEFORE** value is the distance between the front edge of the egg carton and the beginning of the first print text on an egg.

You should set the **AFTERWARDS** value so that the end of the egg carton will not be located under the print head.

**Note:**

By placing a filled egg carton under the machine, you can measure the parameters from the packaging and enter them directly.

**PARAMETER PICCOLO-20**



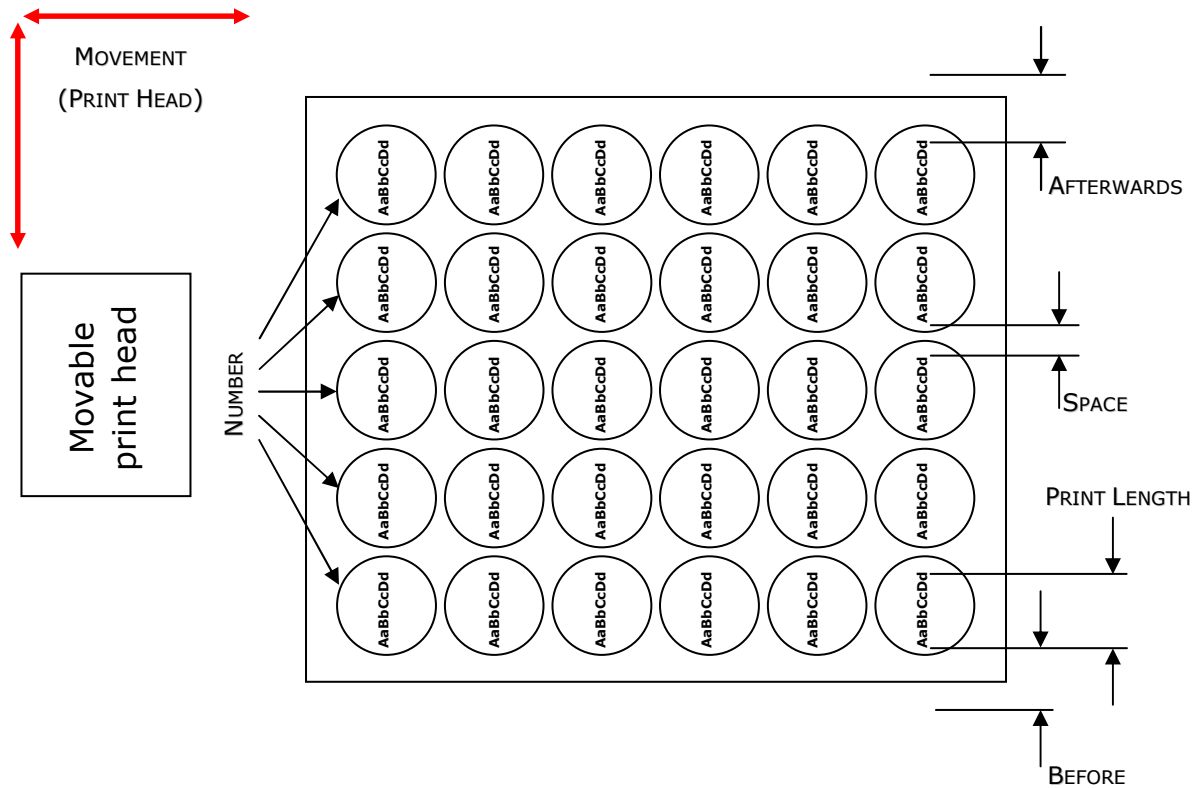
The **BEFORE** value is the distance between the left position of the print head and the beginning of the first print text on an egg.

You should set the **AFTERWARDS** so that the end of the egg carton will not be located under the print head.

**Note:**

By placing a filled egg carton under the machine, you can measure the parameters from the packaging and enter them directly.

**PARAMETER BABY-20**



The **BEFORE** value is the distance between the left position of the print head and the beginning of the first print text on an egg.

You should set the **AFTERWARDS** value so that the print head can slightly go beyond the egg box after printing the last print text.

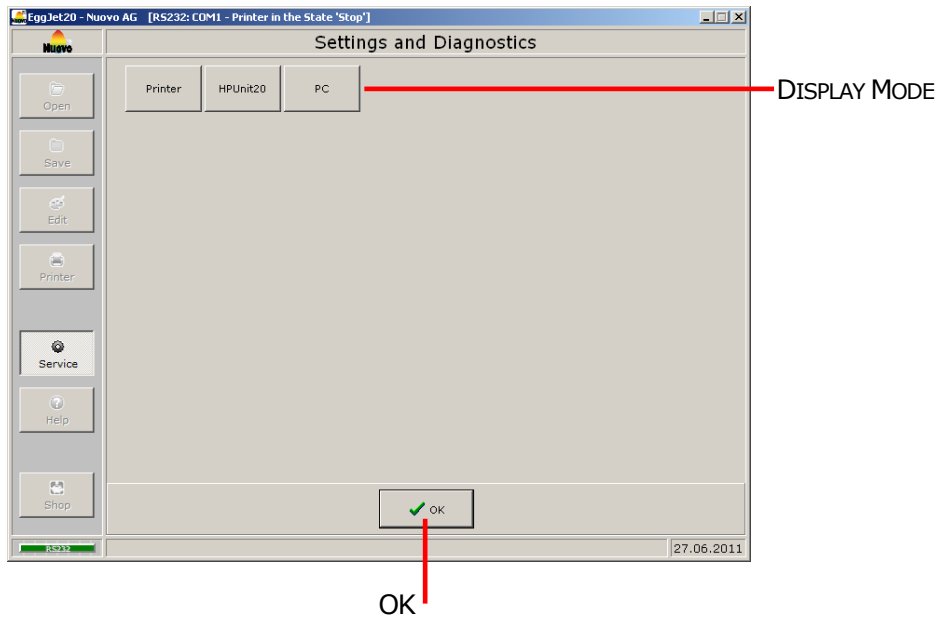
**Note:**

By placing a filled egg carton under the machine, you can measure the parameters from the packaging and enter them directly.

# Settings and Diagnostics

## OVERVIEW

In this section you can view or change the settings of the printer and EggJet20 program. Additionally, you can perform printer diagnostics without using a measurement device.



## DISPLAY MODE

Left-click the desired **DISPLAY MODE** to activate it:

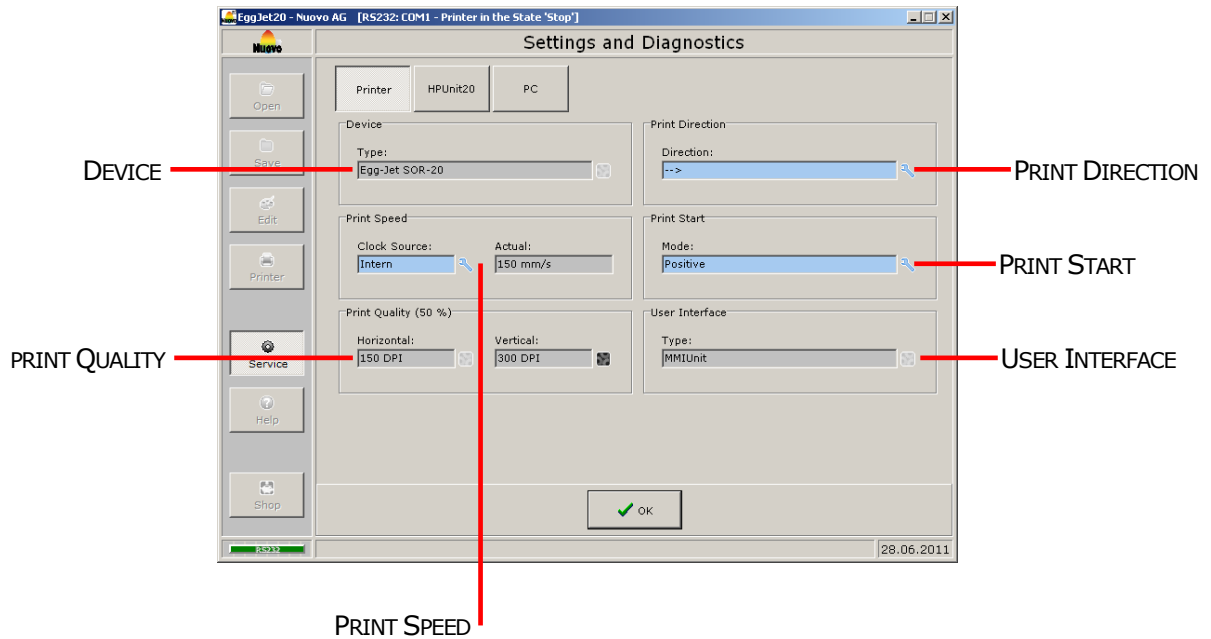
- 1) In **PRINTER** display mode, all the printer-specific settings are displayed.
- 2) In **HPUNIT20** display mode, you will find information about the printer controller.
- 3) In **PC** display mode, you will find information and settings relating to the EggJet20 program.

## OK

Left-click **OK** to leave the **SETTINGS AND DIAGNOSTICS** section.

## PRINTER DISPLAY MODE

Here you will find information and settings relating to the printer.



## DEVICE

In this field, the type of printer is displayed.

**Note:**

If the displayed and the effective type of printer do not match, a wrong firmware has been installed on the printer controller.

## PRINT DIRECTION

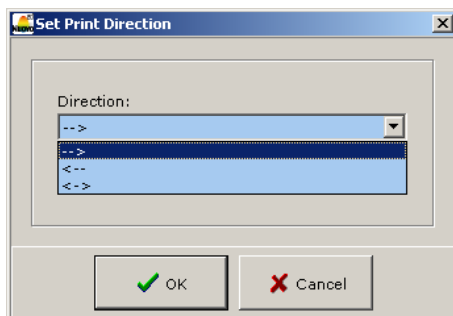
The field **PRINT DIRECTION** indicates, in which direction the egg cartons pass the print head. If you set the direction incorrectly, print texts will be printed horizontally mirrored.

- 1) <-> means that the printer automatically identifies the direction with an additional sensors.
- 2) -> means that the egg cartons pass the printer from left to right.
- 3) <- means that the egg cartons pass the printer from right to left.

The printer types BAN1-20, Piccolo-20 and Baby-20 automatically identify the correct direction. Therefore this setting is preset to <-> and cannot be changed.

For all other printer types the correct setting must be made when the printer is put into operation.

## SET PRINT DIRECTION



**Note:**

As operation mode at least **ADMINISTRATOR MODE** is required.

When you left-click the icon to the right of the **DIRECTION** field, a window opens. In this window, you can select the direction.

Choose **OK** to transfer the new setting to the printer and close the window. If you choose **CANCEL**, no changes will be made to the printer and the window will close.

**PRINT SPEED**

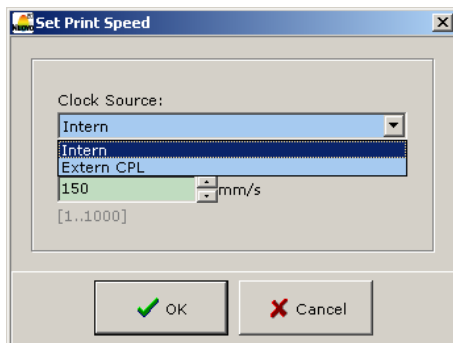
The field **CLOCK SOURCE** shows how the printer determines the correct print speed. During printing, the **ACTUAL** field displays the actual print speed.

- 1) **EXTERNAL CPL** means that the printer measures the correct print speed with a rotary encoder. The egg cartons can pass the printer either intermittently or with a variable speed.
- 2) **INTERNAL** means that the printer works with a fix print speed, provided that the egg cartons pass the print head with a constant speed.

The printer types BAN1-20, Piccolo-20 and Baby-20 automatically measures the print speed with a rotary encoder. Therefore this setting is preset to **EXTERNAL CPL** and cannot be changed.

All other printer types can either be equipped with a rotary encoder or set to a fix print speed. The correct setting must be made when the printer is put into operation.

**SET PRINT SPEED**



**Note:**  
As operation mode at least **ADMINISTRATOR MODE** is required.

When you left-click the icon to the right of the **CLOCK SOURCE** field, a window opens. In this window, you can select the **CLOCK SOURCE** and if needed add the fix print speed.

Choose **OK** to transfer the new setting to the printer and close the window. If you choose **CANCEL**, no changes will be made to the printer and the window will close.



## PRINT START

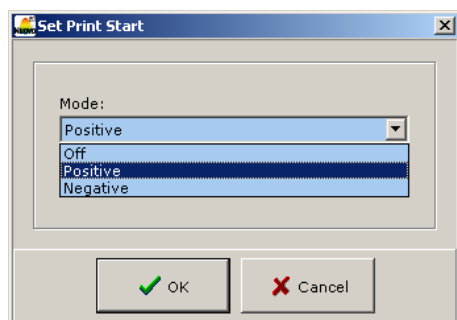
With the help of an optical or inductive sensor the printer recognises the right time to start printing. The **MODE** field shows the signal sequence that triggers the print start.

- 1) **NONE** means that no start signal is needed to trigger the print start.
- 2) **POSITIVE** means that the start signal needs to change from 0 to 1 to trigger the print start.
- 3) **NEGATIVE** means that the start signal needs to change from 1 to 0 to trigger the print start.

This setting is preset for the printer type Piccolo-20 and cannot be changed.

For all other printer types, the correct setting must be made when the printer is put into operation.

## SET PRINT START



**Note:**

As operation mode at least **ADMINISTRATOR MODE** is required.

When you left-click the icon to the right of the **MODE** field, a window opens. In this window, you can change the start detection mode.

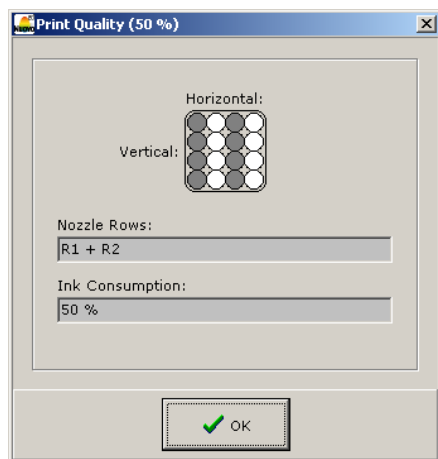
Choose **OK** to transfer the new setting to the printer and close the window. If you choose **CANCEL**, no changes will be made to the printer and the window will close.

## PRINT QUALITY

The field **HORIZONTAL** displays the print resolution in the horizontal and the **VERTICAL** field in vertical direction.

The print resolution is indicated in DPI unit. DPI stands for „Dots per Inch“ and specifies how many ink dots per Inch (25.4mm) are printed. A high DPI value means a detailed print out but also an increase of ink usage.

## PRINT QUALITY INFO



When you left-click the icon to the right of the **VERTICAL** field, a window opens. In this window, you will find information about print quality, print structure and ink consumption.

## USER INTERFACE

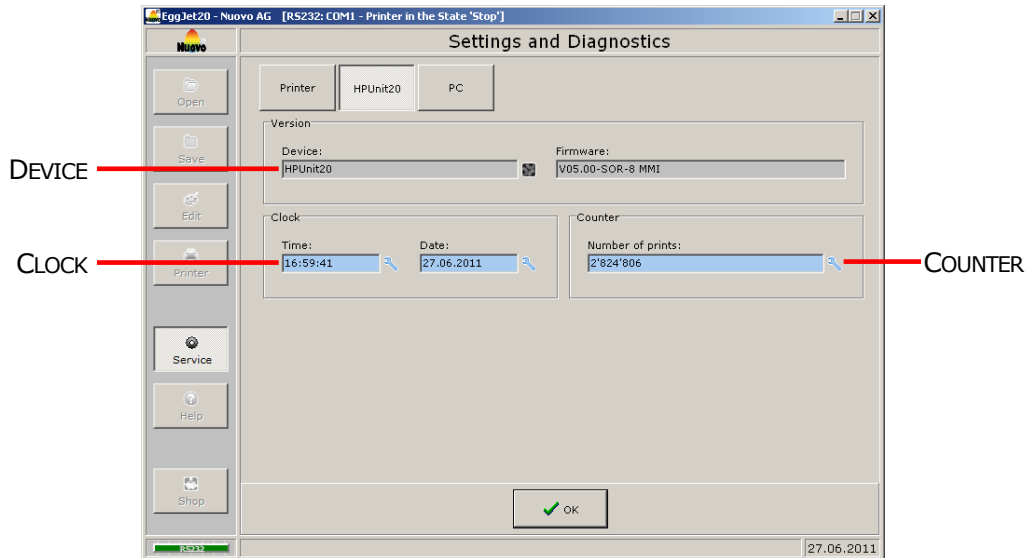
In this field, the user interface of the printer is displayed.

### **Note:**

If the displayed and the effective user interface do not match, a wrong firmware has been installed on the printer controller.

## HPUNIT20 DISPLAY MODE

Here you will find information and settings relating to the printer controller.



### DEVICE

In the **DEVICE** field, the type of printer controller is displayed. In the **FIRMWARE** field, the exact version of the firmware installed on the printer controller is displayed.

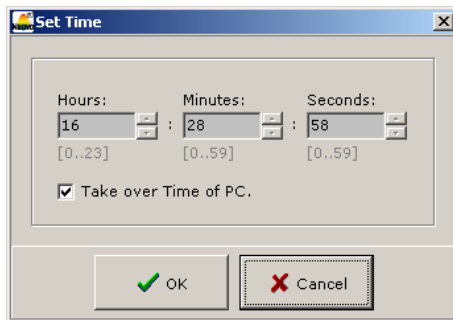
When you left-click the icon to the right of the **DEVICE** field, a window opens. In this window, you will find information about the printer controller.

### CLOCK

In this field the time and date are displayed.

The printer is equipped with a clock. It is a high-precision built-in quartz clock, battery operated should the power supply be interrupted. The clock enables the printer to print out texts with the correct date at any time, provided that the clock is correctly set.

## SET TIME



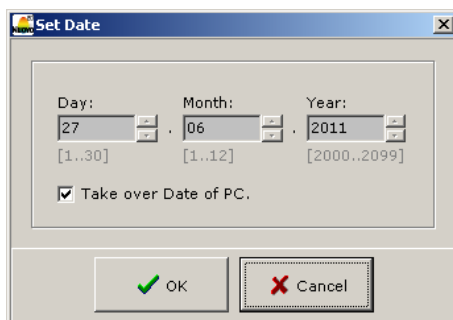
**Note:**

As operation mode at least **ADMINISTRATOR MODE** is required.

When you left-click the icon to the right of the **TIME** field, a window opens. In this window, you can set the time.

Choose **OK** to transfer the new setting to the printer and close the window. If you choose **CANCEL**, no changes will be made to the printer and the window will close.

## SET DATE



**Note:**

As operation mode at least **ADMINISTRATOR MODE** is required.

When you left-click the icon to the right of the **DATE** field, a window opens. In this window, you can set the date.

Choose **OK** to transfer the new setting to the printer and close the window. If you choose **CANCEL**, no changes will be made to the printer and the window will close.

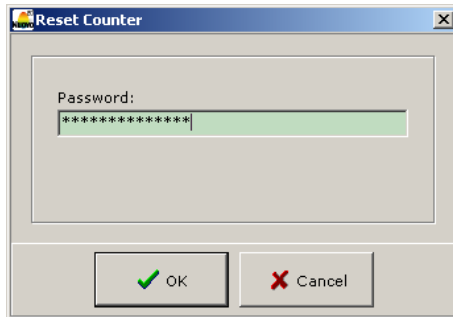
**Note:**

To transfer the print texts from the EggJet20 program to the printer, time and date of the printer and PC must be identical.

## COUNTER

The **NUMBER OF PRINTS** field shows how many print texts the printer has printed.

## RESET COUNTER



**Note:**

As operation mode at least **ADMINISTRATOR MODE** is required.

When you left-click the icon to the right of the **NUMBER OF PRINTS** field, a window opens. In this window, you can reset the counter for the printer.

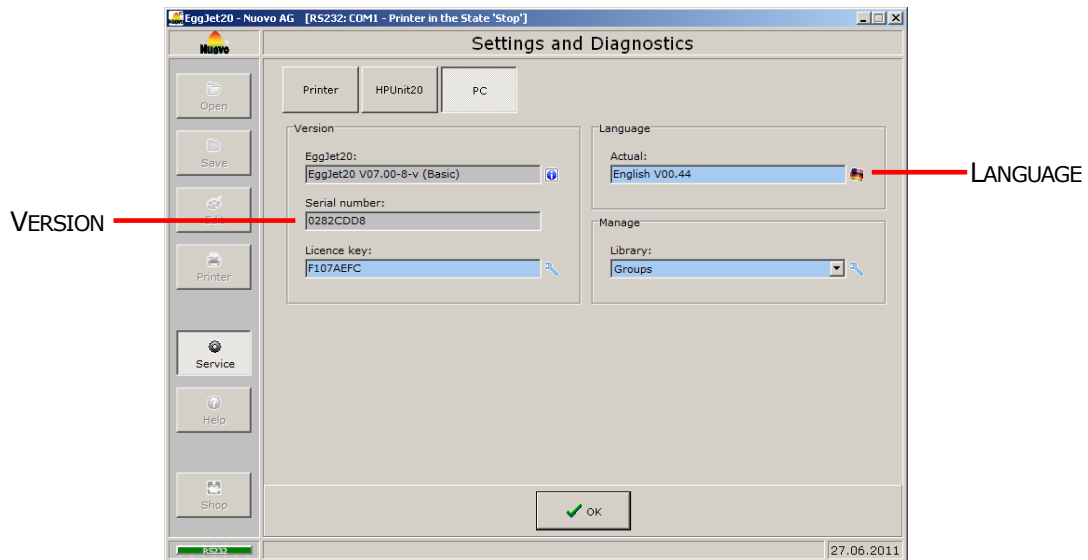
Choose **OK** to reset the counter for the printer and close the window. If you choose **CANCEL**, no changes will be made to the printer and the window will close.

**Note:**

You must enter the correct password to reset the counter.

## PC DISPLAY MODE

Here you will find information and settings relating to the EggJet20 program.



## VERSION

In the field **EGGJET20**, the exact version of the EggJet20 program is displayed. To display additional information about the EggJet20 program, left-click the icon on the right.

In the field **SERIAL NUMBER**, the serial number of your installed EggJet20 program is displayed. This number is required to purchase a licence.

The field **LICENCE KEY** does not contain any information as long as you are working with the trial version. The trial version may only be used for testing purposes and has limited functions. To purchase a licence, left-click the icon on the right. The received licence key has to be entered in this field after receipt.

## LANGUAGE

This field indicates which language the EggJet20 program is using. To change the language for the EggJet20 program, left-click the icon on the right.

# Index

## A-Z

### —A—

Actual .....	32
Adobe Reader .....	12
Apply Parameters to all .....	9
Arrange Move Mode .....	17

### —B—

Baby-20 .....	4, 28
BAN1-20 .....	4, 23
BAN5-20 .....	4, 24

### —C—

Clock .....	35
Clock Source.....	32
Combox .....	4
ComboxCableUSB.....	4
Connection Status .....	6
Contact .....	44
Copy .....	9
Counter.....	35, 37
Cut.....	9

### —D—

Date .....	35
Date Dating .....	19
Date Exchange .....	19
Date Format .....	19
Date Object .....	16
Delete.....	14, 21
Designing Print Texts .....	14
Device.....	30, 35
Display Mode .....	29
Dots per Inch.....	34
DPI.....	34

**—E—**

Edit .....	6, 9, 14
Edit Date Object .....	19
Edit Graphic Object .....	20
Edit Text Object .....	18
EggJet20 .....	38
EggPaint.....	20
Export Group .....	8
Export Object as Graphic.....	18, 19, 20
External CPL .....	32

**—F—**

Firmware.....	35
---------------	----

**—G—**

Getting Started .....	3
Graphic Formats.....	16, 20
Graphic Object .....	16
Group .....	7
Group Name .....	6, 7

**—H—**

Help.....	6, 12
Horizontal.....	34
HPUnit20.....	29, 35

**—I—**

Import Group.....	8
Index.....	39
Info .....	12
Ink Consumption .....	34
Insert.....	14, 16
Installing EggJet20 .....	5
Interface Cable .....	4
Internal.....	32

**—L—**

Language .....	38
Licence.....	38
Licence key.....	38
Logo .....	6, 13



**—M—**

Main Screen .....	6
Microsoft Windows .....	4
Mode .....	33
Mouse Move Mode .....	17
Move .....	14, 17

**—N—**

Negative.....	33
New Group .....	8
Number of Prints .....	37
Nuovo AG .....	1, 44
Nuovo BV .....	44

**—O—**

Object Types.....	16
Open .....	6, 8
Open Group .....	8
Open Group from Printer .....	10
Open Print Text from Printer .....	10
Operating System.....	4

**—P—**

Parameter Baby-20.....	28
Parameter BAN1-20 .....	23
Parameter BAN5-20 .....	24
Parameter Piccolo-20 .....	27
Parameter SOR-20.....	26
Parameter Sprinter-20 .....	25
Parameters .....	14, 22
Paste .....	9
Paste Objects.....	9
Paste Parameters .....	9
PC .....	4, 29, 38
Pc remote control .....	12
PDF reader .....	12
Piccolo-20.....	4, 27
Positive .....	33
Print Direction .....	30, 31
Print Preview.....	7
Print Quality .....	30, 34
Print Resolution.....	34

Print Screen .....	13
Print Speed .....	30, 32
Print Start .....	30, 33
Print Structure .....	34
Print text .....	6
Print Text .....	7
Print Text position on the egg .....	22
Print Text Preview .....	14, 15, 16, 17, 18, 19, 20, 21, 22
Printer.....	6, 10, 29, 30
Printer Status.....	6
<b>–Q–</b>	
Quick Save .....	6, 8
<b>–R–</b>	
Remote Control .....	10
Remove.....	21
Reset Counter .....	37
RS232.....	4
<b>–S–</b>	
Save .....	6, 8
Save Group .....	8
Save Group as... .....	8
Save Group to Printer .....	10
Search for Printer .....	10
Send an e-mail.....	12
Serial Interface .....	4
Serial number .....	38
Service.....	6, 11
Set Date.....	36
Set Language.....	11, 13, 38
Set Operation Mode .....	11, 13
Set Print Direction .....	31
Set Print Speed .....	32
Set Print Start.....	33
Set Time .....	36
Settings and Diagnostics .....	11, 29
Shop.....	12
SOR-20 .....	4, 26
Sprinter-20 .....	4, 25
Supported Printers.....	4

---

Switzerland.....	44
System Requirements .....	4
<b>–T–</b>	
Table of Contents .....	2
Text Object.....	16
The Netherlands.....	44
Time .....	35
Trial version.....	38
Type of Printer .....	30
<b>–U–</b>	
Uninstalling EggJet20.....	5
Update .....	11
USB .....	4
USB Stick .....	8
User Guide .....	12
User Interface .....	30, 34
<b>–V–</b>	
Version .....	35, 38
Vertical .....	34
View .....	6, 7
View Date Objects .....	7
View Parameters X .....	7
View Print Preview .....	7, 22
<b>–W–</b>	
Windows XP.....	4
Work Mode .....	14

---

## Contact

### SWITZERLAND

Nuovo AG  
Barzloostrasse 20  
8330 Pfäffikon ZH  
Switzerland

Tel.: +41 (0)44 950 05 20  
Fax: +41 (0)44 950 57 33  
E-mail: [info@nuovo.ch](mailto:info@nuovo.ch)  
URL: [www.nuovo.ch](http://www.nuovo.ch)



### THE NETHERLANDS

Nuovo BV  
Dorpsstraat 84  
5471 NA LOOSBROEK  
The Netherlands

Tel.: +31 (0)413 229 180  
Fax: +31 (0)413 229 158  
E-mail: [info@nuovo.ch](mailto:info@nuovo.ch)  
URL: [www.nuovo.ch](http://www.nuovo.ch)

