

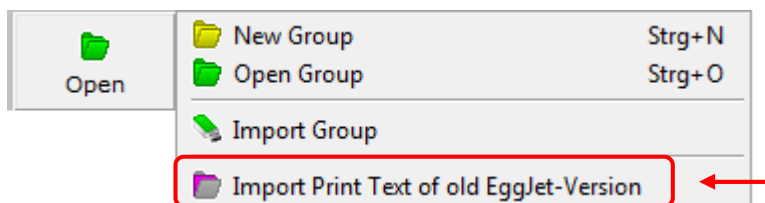
IMPORT PRINT TEXTS FROM AN OLDER EGGJET-VERSION

Overview

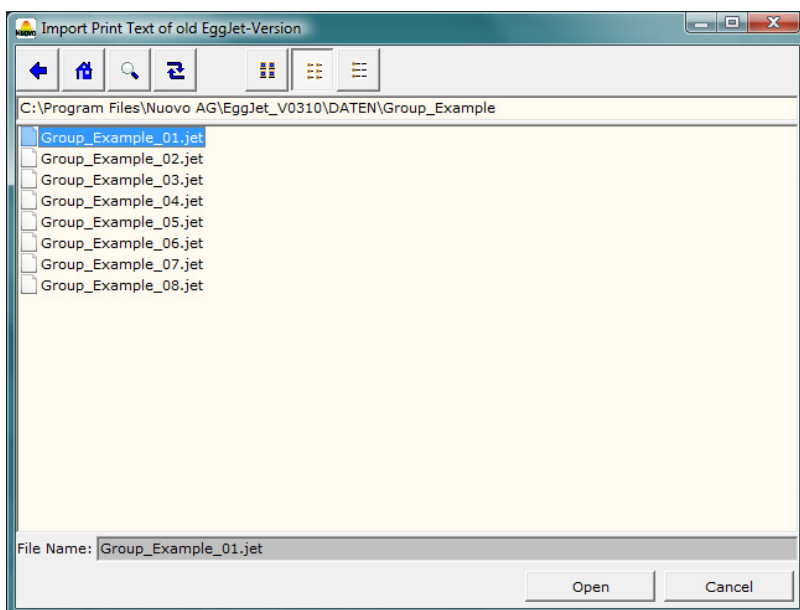
Print texts that were created on EggJet-version V2.00 or V3.10 can be imported into the new version V7.00 or higher with the **IMPORT PRINT TEXT OF OLD EGGJET-VERSION** function. For this you need the service mode **MASTER** and the password, which is **MASTER** for both programs.

Detailed steps

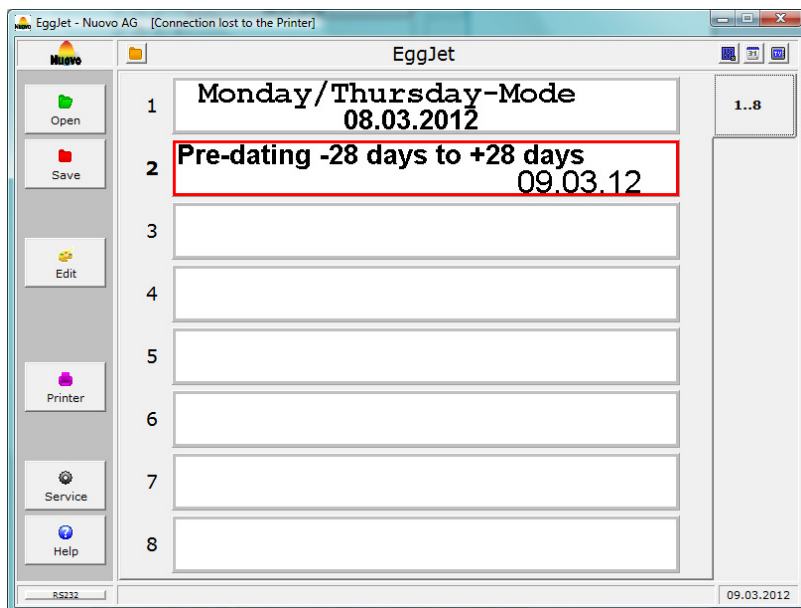
- 1) Log in with the service mode **MASTER**.
- 2) Create a new group via **OPEN → NEW GROUP**.
- 3) Choose **OPEN → IMPORT PRINT TEXT OF OLD EGGJET-VERSION**.



- 4) Search the old group and import the first print text. By default groups are saved under C:\Program Files\Nuovo AG\EggJet_Vxxxx\DATA\. If you have changed the memory location, go to your chosen location.



- 5) Highlight the next print text field with a mouse click, chose again the **IMPORT PRINT TEXT OF OLD EGGJET-VERSION** function and import the next print text.



- 6) Repeat step 3 to 5 until you have imported all 8 print texts.
- 7) Save the new group on your PC.